

A Cinerary Urn, found near Charterhouse on Mendip.

BY G. R. STANTON, B.A.

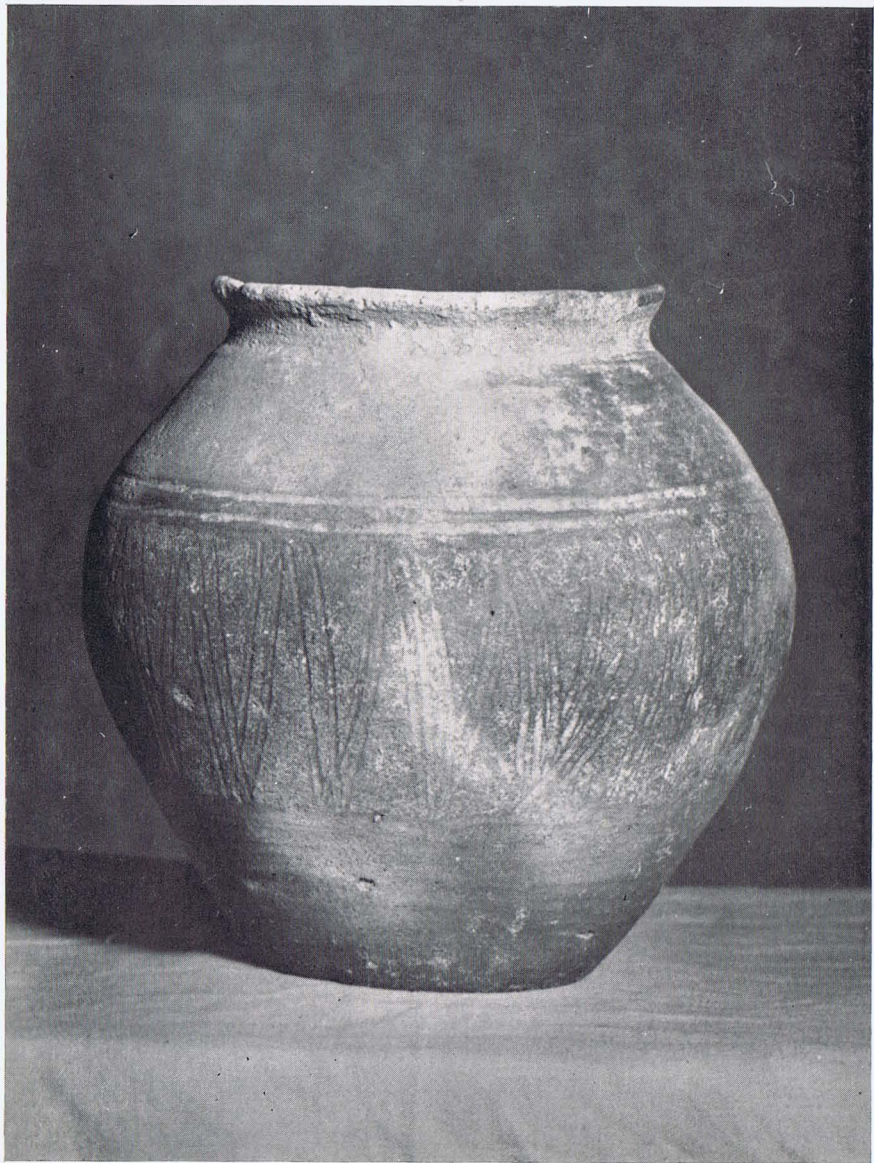
In an excavation for a water-pipe near Charterhouse on Mendip, on October 8th, 1942, Mr. Mark Maby found a cinerary urn. The urn was found immediately to the East of the road from Paywell Farm to Charterhouse and approximately 550 yards South-west of Paywell Farm. Geologically this is at the junction of the Old Red Sandstone and Lower Limestone Shales.

The pot was at a depth of about 15 in., surrounded by fragments of limestone, with a stone cover and containing fragments of burnt bones. The shape of the pot is globular, with a flanged rim (*see* Collingwood, *Roman Britain*, No. 62). The pottery is coarse, burnt red and black. The decoration is a wide band of nearly vertical zig-zag combed lines. The height is $6\frac{3}{4}$ in. (17.3 cms.); the diameter 7 in. (17.8 cms.). (*See Plate 18.*)

The period appears to be first century A.D. early in the Roman occupation. The pot has been given to the Bristol Museum and Art Gallery by Mr. A. R. Milliar. With it were given four small fragments of Roman pottery.

Mr. H. Tetley reports that among the bones are two small fragments of a human skull, and some fragments of non-human bones.

PLATE 18.



A Cinerary Urn : from a site near Charterhouse on Mendip.